

# **DEFENDER**

**ISUZU D-MAX 2016 - 2020**

BULL-BAR INSTALLATION INSTRUCTION

### STEP 1:

Unwrap kit & lay items in front of you



### STEP 2:

Open bonnet



### STEP 3:

Remove front trim and grill  
4 clips and screw in front middle



### STEP 4:

Remove 4 clips that were below  
grill on bumper and 2 behind  
bumper



#### STEP 5:

Remove 1 clip on each side under fender where bumper joins



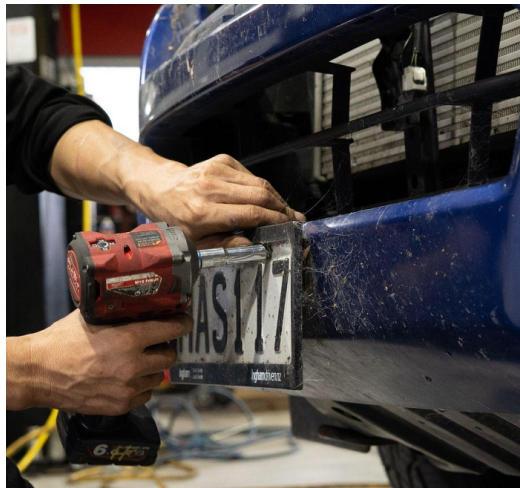
#### STEP 6:

Remove factory bull bar via bolts under bumper



#### STEP 7:

Remove license plate



#### STEP 8:

Remove clips under bumper  
1 on each side on front and 1 on  
each side behind mudflap



#### STEP 9:

Remove bolt behind mudflap



#### STEP 10:

Fully remove bumper  
(remember to disconnect wiring  
for lights)



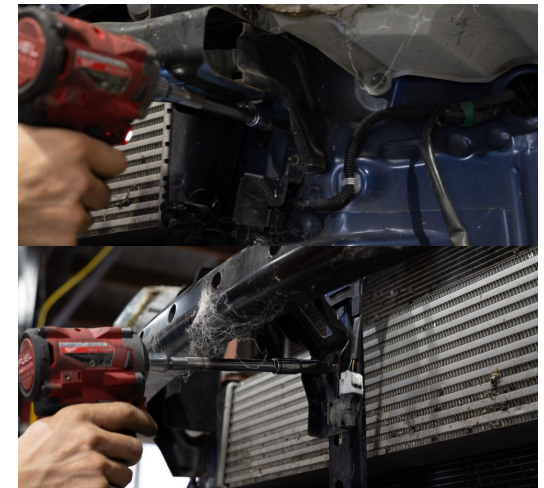
#### STEP 11:

Remove plastic behind bumper  
(clips)



#### STEP 12:

Remove bumper support  
2 bolts each side + 2 in middle  
Also remove sensor connectors



#### STEP 13:

Place sensor covers back



#### STEP 14:

Remove front lower support bar  
2 bolts each side and 3 across  
bottom(through bash plate



#### STEP 15:

Remove these brackets



#### STEP 16:

Remove oem bash plate  
2 remaining bolts underneath



### STEP 17:

Remove white side pieces  
1 bolt 1 screw then pops off



### STEP 18:

Remove brackets on sides  
connected to fender trim  
2 bolts



### STEP 19:

Cut across trim



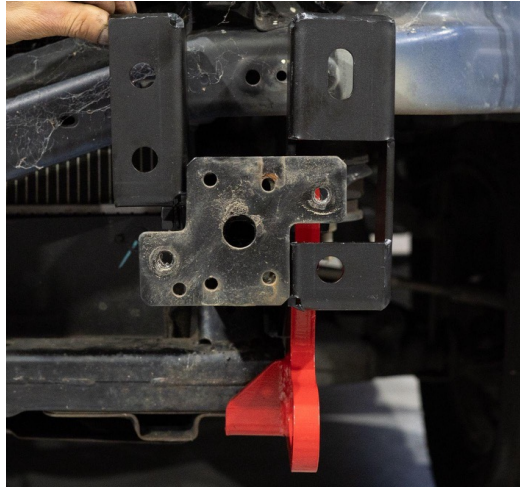
### STEP 20:

Place red and black brackets up  
to chassis mount



### STEP 21:

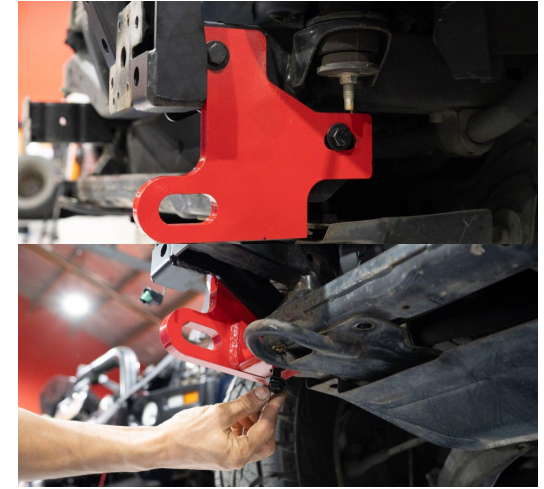
Place 1 bolt in and the 2nd black piece connects on the inside



### STEP 22:

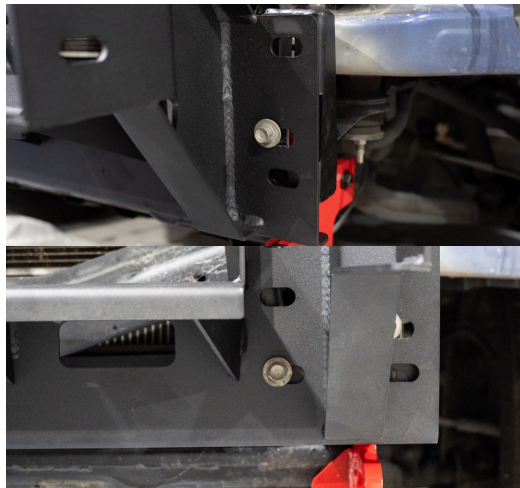
Fit remaining bolts  
3 in total 2 on side and one on bottom

The bolt on bottom has the bigger wider thread



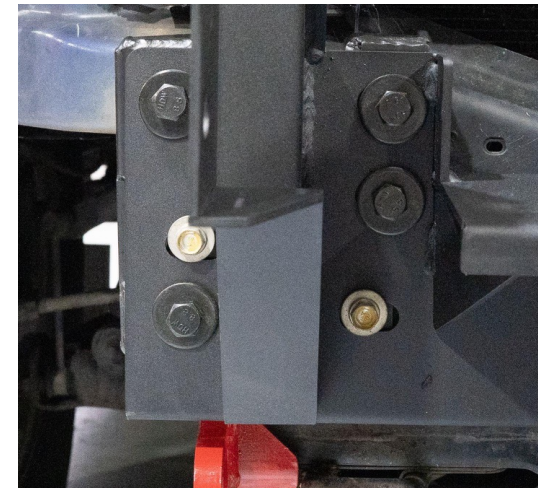
### STEP 23:

Place bull bar mount up to mounts and place 2 oem bolts back in on each side one on outside and one inside



### STEP 24:

Then add 4 bolts on face on each side



#### STEP 25:

Replace lights in bull bar with LED



#### STEP 26:

Apply pinch weld to the top of the bullbar



#### STEP 27:

Attach the triangle plates onto the bull bar  
These sit below the headlights



#### STEP 28:

Lift bull bar up onto truck



### STEP 29:

Bolt onto mounts



### STEP 30:

Attach side plates  
5 screws each side



### STEP 31:

Attach bash plate  
5 screws, 3 at front, 2 at rear



### STEP 32:

Place grill and top trim back in

